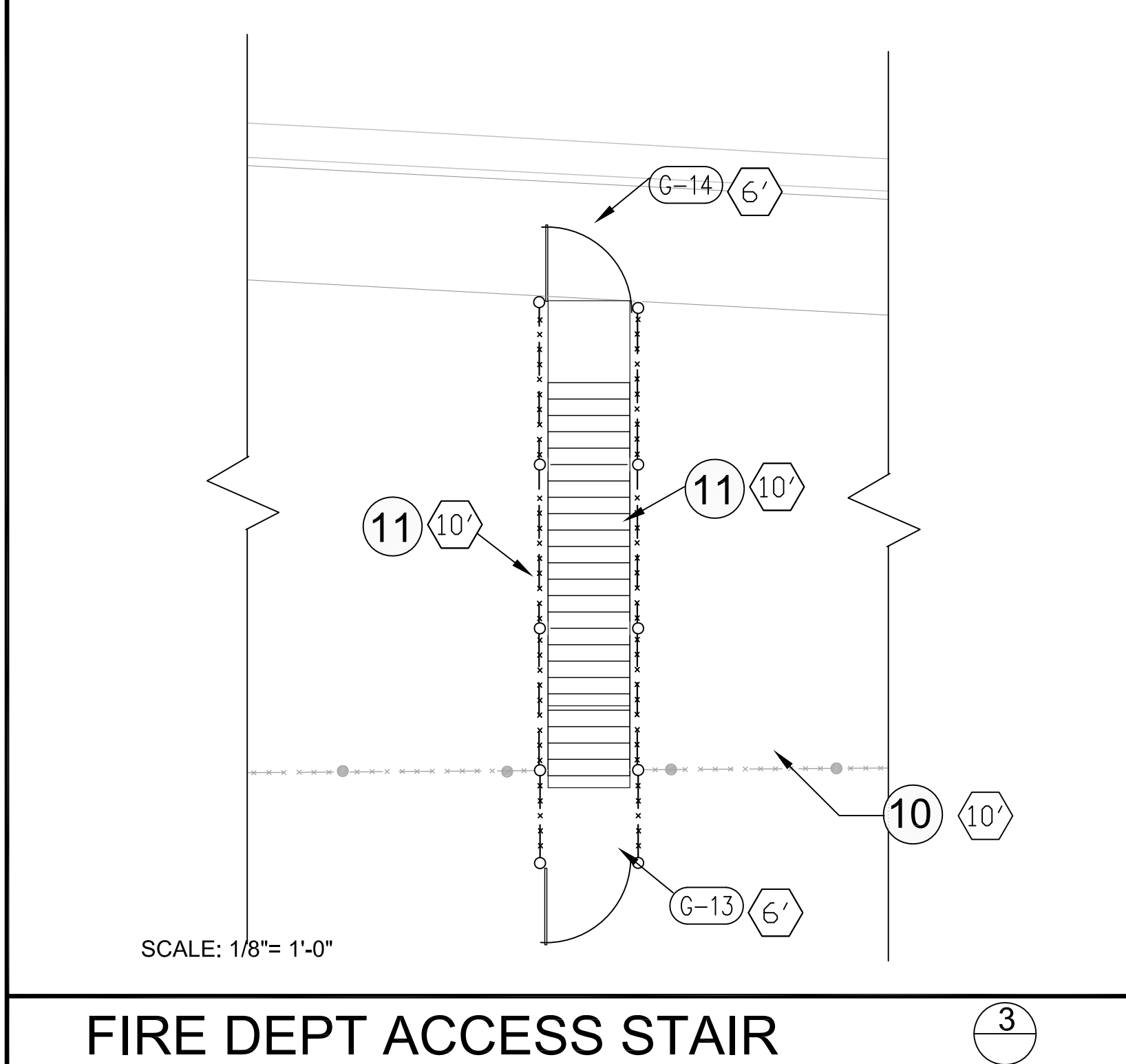


PLAN KEYNOTES

- 1 NEW RUBBERIZED TRACK SUB-BASE, BASE, AND SURFACING - SEE SHEET TF 2.1
- 2 NEW SYNTHETIC TURF FIELD SEE SHEET TF 2.2
- 3 NEW LONG JUMP/TRIPLE JUMP VENUES SEE DETAIL FOR ALL LAYOUT DIMENSIONS
- 4 NEW POLE VAULT VENUE SEE DETAIL FOR ALL LAYOUT DIMENSIONS
- 5 NEW HIGH JUMP VENUE SEE DETAIL FOR ALL LAYOUT DIMENSIONS
- 6 EXISTING STEEPLE JUMP TO REMAIN - PROVIDE NEW COVER AND NEW STEEPLECHASE HURDLES
- 8 NEW AND EXISTING SITE PAVING - SEE CIVIL SITE PLAN
- 9 NEW SYNTHETIC TURF - SEE (2A) (2B) FOR DETAILS
- 10 EXISTING CL FENCING - POSTS AND HARDWARE TO REMAIN. PROVIDE AND INSTALL NEW FABRIC TO MATCH NEW FENCING IN KIND - HEIGHT NOTED FOR REFERENCE
- 11 NEW CHAIN LINK FENCING PER HEIGHT NOTED
- 13 NEW FENCE FOR FIRE DEPARTMENT ACCESS STAIR
- 16 EXISTING LANDSCAPING TO REMAIN SEE PROTECTION REQUIREMENTS BELOW
- 17 EXISTING SLOPE LANDSCAPING TO REMAIN SEE PROTECTION AND EROSION STABILIZATION LANDSCAPE REQUIREMENTS BELOW
- 18 NEW DISCUS THROWERS CIRCLE PORTABLE CAGE OFI SHOWN FOR REFERENCE ONLY
- 19 NEW SLEEVED DISCUS PROTECTION NETTING
- 20 EXISTING CHAIN LINK FENCE TO REMAIN AS-IS PROTECT IN PLACE
- 12' DENOTES FENCE HEIGHT
- G-10 DENOTES NEW GATE TYPE PER SHEET G102
- G-EX DENOTES EXISTING GATE TO REMAIN REPLACE CL FABRIC WITH NEW TO MATCH NEW FENCING



REVISIONS

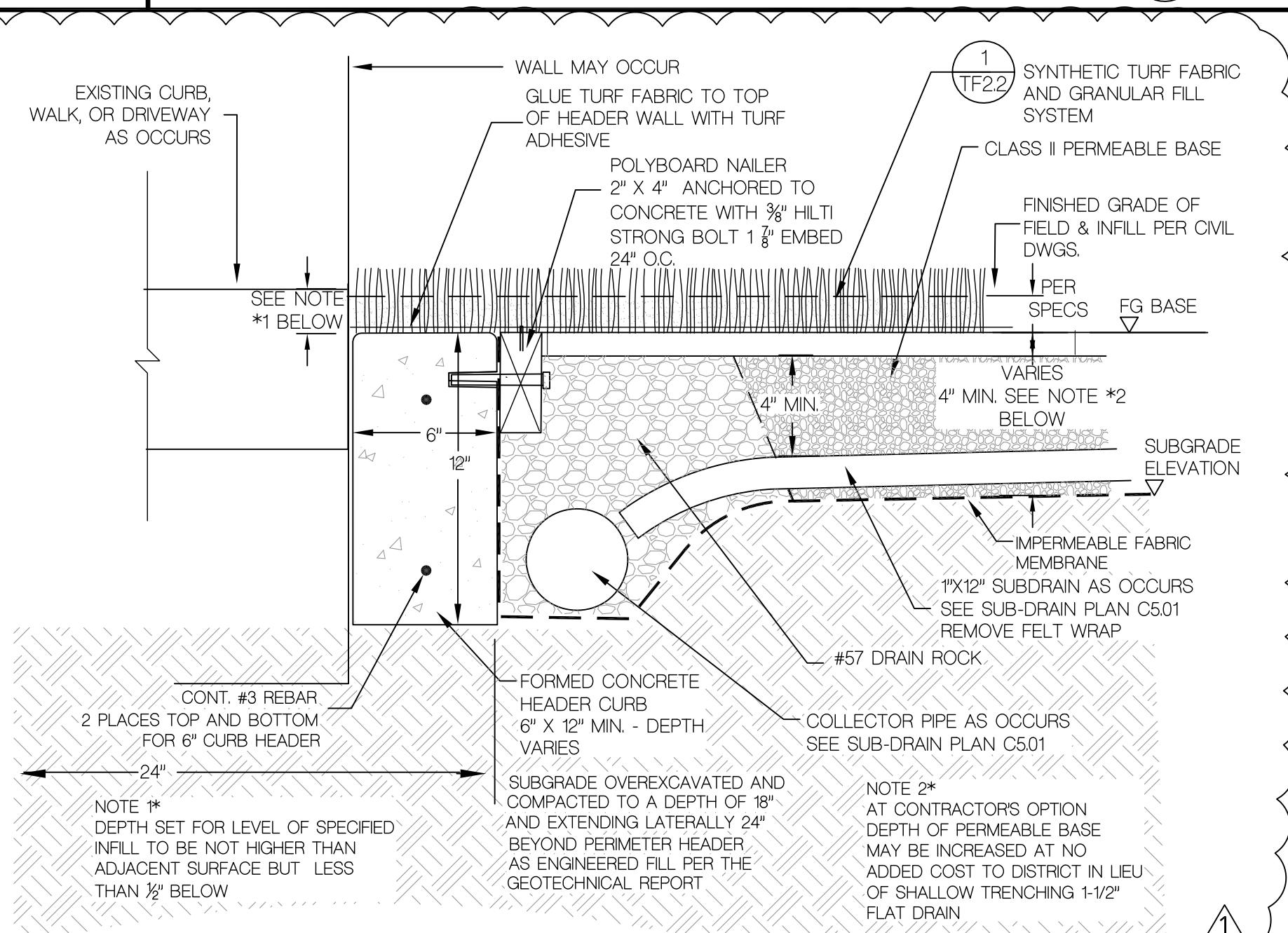
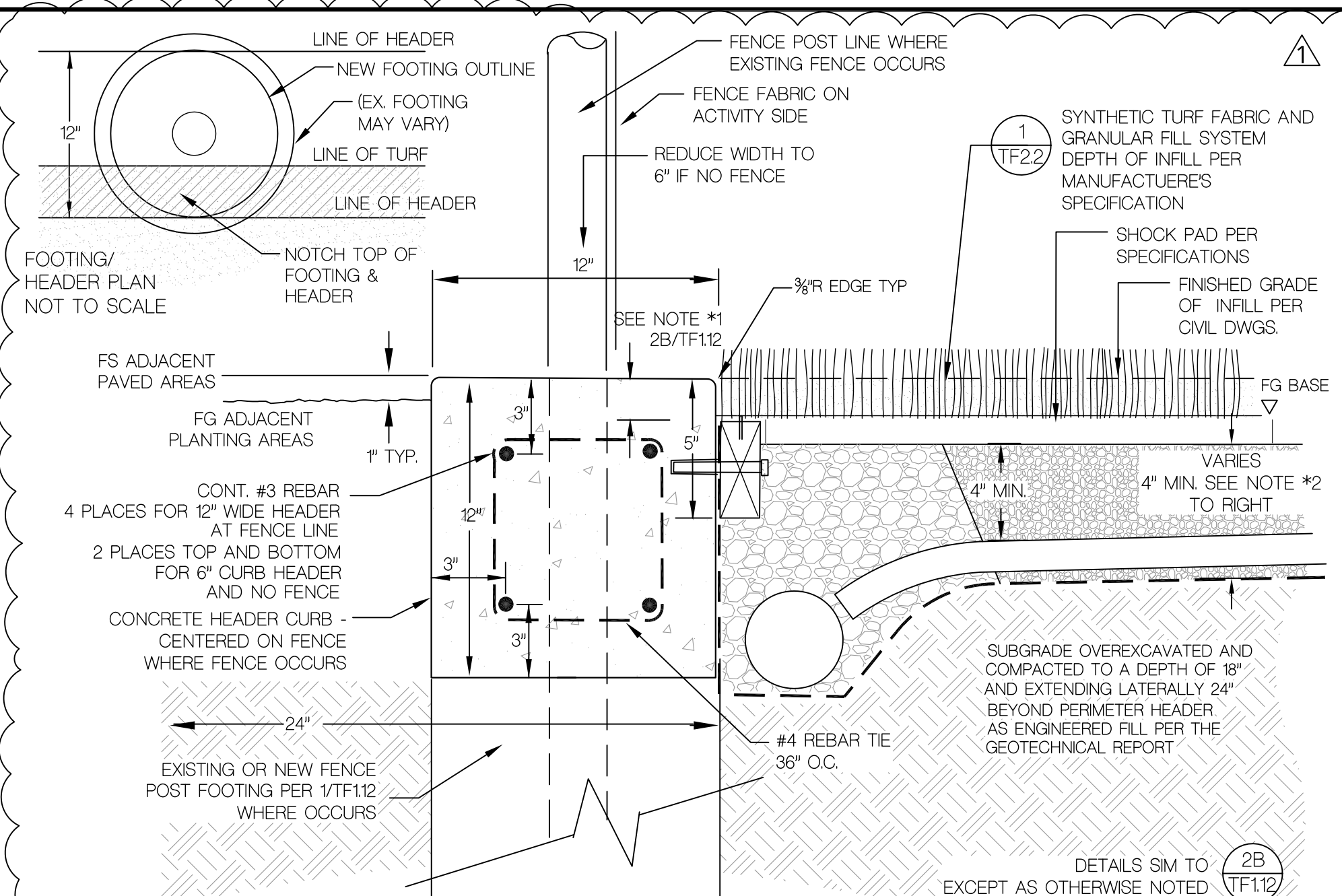
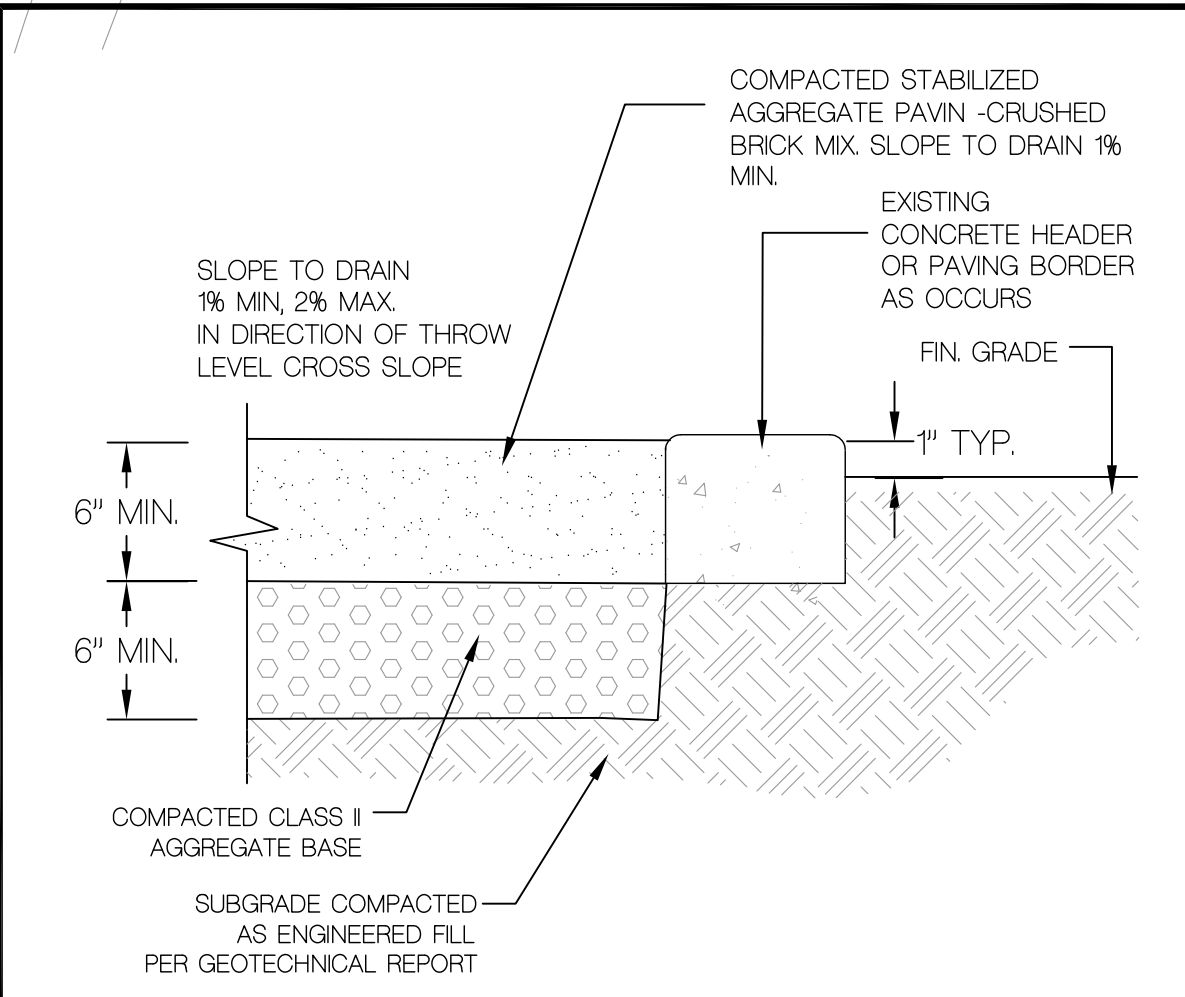
1 ADDENDUM 1 02/01/2022

THIS APPROVAL IS FOR ITEMS WITHIN CLOUDED AREAS ONLY. FOR OTHER INFORMATION NOT CONTAINED WITHIN CLOUDED AREAS, REFER TO ORIGINAL DSA APPROVED PLANS.

DO NOT USE THESE PLANS AS SUBSTITUTE FOR THE ORIGINAL DSA APPROVED PLANS

CONSULTANT
CARTER, ROMANEK
Landscape Architects, Inc.
28720 Roadside Drive, Suite 100
Agoura Hills, California 91301
(310)477-3900

LANDSCAPE ARCHITECT
STATE OF CALIFORNIA
12707
REAL STATE



GILL
www.gillathletics.com
800-637-3090

740144 - WATER JUMP BARRIER - SURFACE MOUNT INSTRUCTIONS

The 740144 Water Jump Barrier is designed to be mounted to the top of the concrete wall of a water jump pit. The beam is 12 feet wide

12 feet (740144)

ANCHOR INTO EXISTING PIT HEADER WALL USING SIMPSON STRONG BOLT 2 STAINLESS STEEL 1/2" x 4" EXPANSION ANCHORS

Stainless steel mounting hardware

Spring loaded pull pin & clamping knobs for height adjustments

PROVIDE NEW 730146 CUSTOM FIT JUMP PIT COVER

The barrier adjusts to three heights; 30, 33, and 36 inches. The beam is locked in position with a stainless steel spring loaded pull pin and clamping knobs.

The beam is constructed of 4 inch square 11 gauge steel tube, covered on three sides with 1/2 inch thick Vulktrak track surface.

The leg assemblies are fabricated from 2-1/2" and 3-1/2" Sch 40 steel pipe with spring assist. The legs are painted with powder coat for a durable finish.

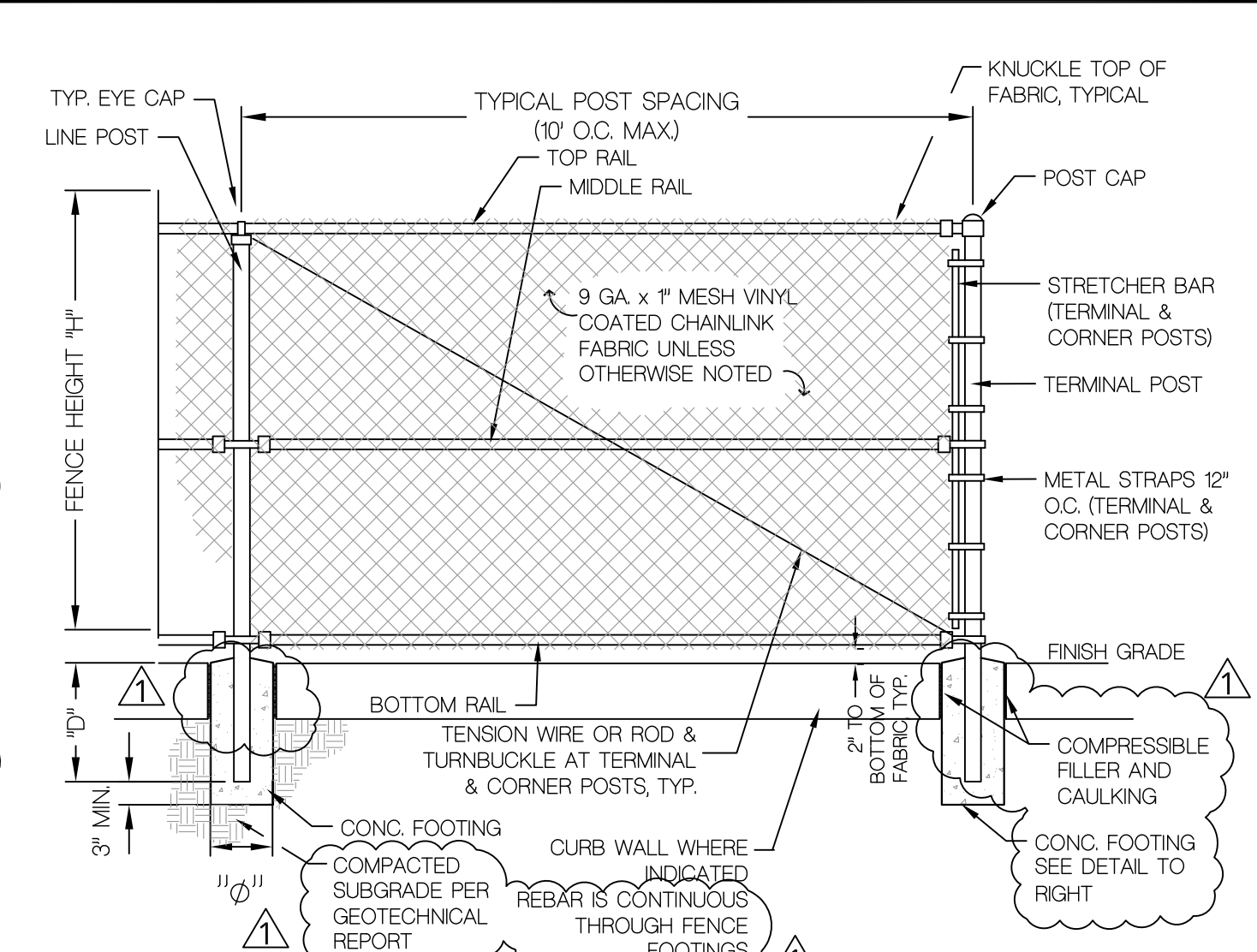
The leg assemblies bolt securely to half inch thick stainless steel anchor plates. These plates are secured to the top of the pit wall with four concrete anchors each.

NCAA compliant and IAAF certified.

PROVIDE WITH 740145/212 MESH WATER JUMP BARRIER ALSO PROVIDE WITH CITY 41 740150 PORTABLE ADJUSTABLE STEEPLECHASE HURDLES WITH DROP-DOWN WHEELS

6/12/2015
INST740144
Page 1 of 4

Copyright ©2012 by Gill Athletics. All rights reserved.



CHAIN LINK FENCING SCHEDULE

FENCE POLE AND FOOTING SCHEDULE	6 FOOT	8 FOOT	10 FOOT
FABRIC	9 GA. 2" GALV.	9 GA. 2" GALV.	9 GA. 2" GALV.
POST SPACING (MAX)	17' O.C. MAX.	17' O.C.	17' O.C.
TERMINAL & CORNER POSTS	2-1/2" Ø	2-1/2" Ø	2-7/8" Ø
LINE POSTS	2-1/2" Ø	2-1/2" Ø	2-1/2" Ø
GATE POSTS	2-7/8" Ø	2-7/8" Ø	2-7/8" Ø
TERMINAL & CORNER POST FOOTINGS 12" x 12"	12" x 36" Ø = 36" DIA.	12" x 36" Ø = 36" DIA.	12" x 36" Ø = 36" DIA.
TERMINAL & CORNER POST INTERMEDIATE TIES	5 Ø #3	5 Ø #3	5 Ø #3
LINE POST FOOTINGS 12" x 12"	12" x 30" Ø = 30" DIA.	12" x 40" Ø = 40" DIA.	12" x 40" Ø = 40" DIA.
LINE POST INTERMEDIATE TIES	4 Ø #3	4 Ø #3	4 Ø #3
GATE POST FOOTINGS 12" x 12"	12" x 40" Ø = 40" DIA.	12" x 40" Ø = 40" DIA.	12" x 40" Ø = 40" DIA.
GATE POST INTERMEDIATE TIES	4 Ø #3	4 Ø #3	4 Ø #3
TOP RAIL	1-5/8" Ø	1-5/8" Ø	1-5/8" Ø
MIDDLE RAIL	1-5/8" Ø	1-5/8" Ø	1-5/8" Ø
BOTTOM RAIL	1-5/8" Ø	1-5/8" Ø	1-5/8" Ø
TENSION WIRE OR TRUSS ROD W/ TURNBUCKLE	30# TRUSS ROD W/ TURNBUCKLE	30# TRUSS ROD W/ TURNBUCKLE	30# TRUSS ROD W/ TURNBUCKLE

NOTES

- ALL FABRIC SHALL BE VINYL COATED, COLOR BLACK.
- ALL POSTS AND HARDWARE SHALL BE HOT DIP GALVANIZED.
- KNUCKLE TOP OF FABRIC.
- FABRIC TO POSTS, RAILS AND TENSION WIRES OR RODS WITH 11 GA. GALVANIZED WIRE AT 12" O.C. MAX.
- ALL POSTS & RAILS SHALL BE SCH40 STANDARD WT. PIPE FOR GATE DETAILS SEE SHEET AG05

CHAIN LINK FENCING - NEW FENCING ONLY

LANDSCAPING REQUIREMENTS

THE SCOPE OF THE PROJECT INCLUDES THE FOLLOWING LANDSCAPE WORK

- 16 EXISTING LANDSCAPING TO REMAIN INCLUDING TREES, SHRUBS, AND GROUNDCOVERS SHALL BE PROTECTED AND MAINTAINED THROUGHOUT THE ENTIRE CONSTRUCTION PERIOD. TEMPORARY IRRIGATION SHALL BE PROVIDED WHENEVER PERMANENT IRRIGATION IS DISABLED OR NOT FUNCTIONING FOR ANY REASON. WHEN TRIMMING IS REQUIRED TO COMPLETE ANY WORK IT SHALL ONLY BE PERFORMED BY EXPERIENCED AND QUALIFIED WORKERS. ANY PLANT MATERIAL DAMAGED DURING THE CONSTRUCTION SHALL BE REPLACED IN LIKE KIND, NUMBER, AND EXTENT TO MATCH PLANTINGS EXISTING AT THE COMMENCEMENT OF THE PROJECT.

REQUIRED LANDSCAPE WORK INCLUDES:

- SELECTIVE REMOVAL AND REPLACEMENT OF PLANTS FOR ACCESS TO EXISTING FENCING FOR FENCE FABRIC REPLACEMENT PER KEYNOTE #10 ABOVE.
- SELECTIVE REMOVAL AND REPLANTING OF GROUND COVERS WHERE TRENCHING AND EXCAVATING IS REQUIRED.
- SELECTIVE REMOVAL AND REPLANTING OF PLANTS WHERE NEW PAVING, WALLS AND RETAINING WALLS, AND FORM WORK OCCURS.
- INSTALLATION OF JUTE NETTING AND INFILL GROUND COVER PLANTING FOR EAST SLOPE LANDSCAPING ENHANCEMENT PER KEYNOTE #17 THIS SHEET.

- 17 IN ADDITION TO THE REQUIREMENTS FOR PROTECTION AND MAINTENANCE OF EXISTING LANDSCAPING, THE LANDSCAPING OF THE AREA SO DESIGNATED AT THE EAST PERIMETER OF THE PROJECT SHALL BE ENHANCED TO PREVENT EROSION OF THE SLOPING GROUND AS FOLLOWS:

- THE EXISTING IRRIGATION SYSTEM SHALL BE REWORKED AND RECONNECTED AS DESCRIBED ON SHEET TF.
- WEEDS SHALL BE REMOVED BY HAND CULTIVATION.
- AMENDMENT AND FERTILIZER SHALL BE TILLED INTO THE UPPER 4" OF ALL BARE SOIL AREAS.
- FIRE RETARDER TREATED SMOLDER RESISTANT JUTE NETTING IS TO BE PLACED ON ALL BARE SOIL THROUGHOUT THE ENTIRE AREA, AROUND EXISTING TREES AND GROUND COVERS AND UNDER EXISTING SHRUBS. THE NETTING SHALL BE ANCHORED TO THE GROUND WITH GALVANIZED WIRE STALBES 36" O.C.B.W.
- NEW MYOPORUM PARVIFOLIA 1 GALLON GROUND COVER SHALL BE PLANTED IN ALL BARE AREAS THROUGH HOLES IN THE NETTING AT A SPACING NOT TO EXCEED 30" O.C.

NORWALK LA MIRADA UNIFIED SCHOOL DISTRICT
LA MIRADA HIGH SCHOOL NEW FOOTBALL STADIUM PROJECT
13520 ADELEA DRIVE, LA MIRADA, CA 90638

DSA # 03-120551

NAC
ARCHITECTURE

NAC NO. 161-19015
DATE 02/01/2022

DSA BACKCHECK
SUBMISSION

TRACK AND FIELD
OVERALL AND
FENCING PLAN

TF 1.12